

PART NUMBER CONFIGURATOR

SEE SHEET 2 FOR MORE EXAMPLES

TUBE CODE & DIAMETER	
01	.062"
02	.125"
03	.187"
04	.250"
06	.375"
08	.500"
10	.625"
12	.750"

MATERIAL CODE	
C	COPPER CDA 101
N	NICKEL 200

FA2 02 CC XF C 085

TOTAL LENGTH EQUALS TUBE LENGTH XX.X + Y DIMENSIONS FOR ENDS A&B

PINCH-OFF DESIGNATOR
NOT A VARIABLE

TUBE DIAMETER

END A

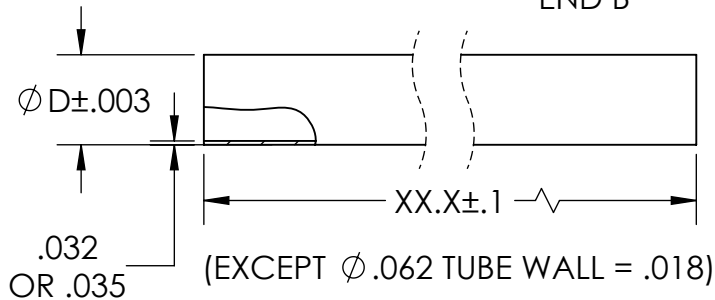
END B

TUBE LENGTH, INCHES & TENTHS
OMIT THE DECIMAL POINT
USE LEADING ZERO IF < 10.0"

TUBE MATERIAL

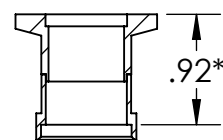
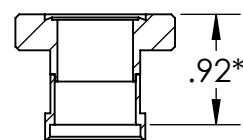
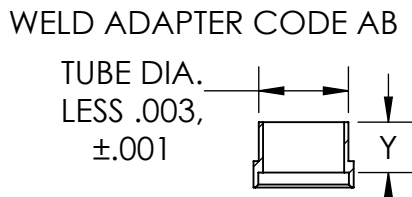
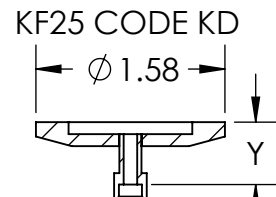
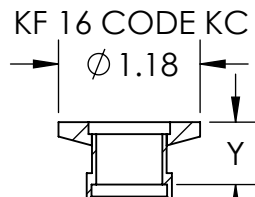
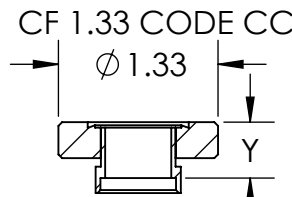
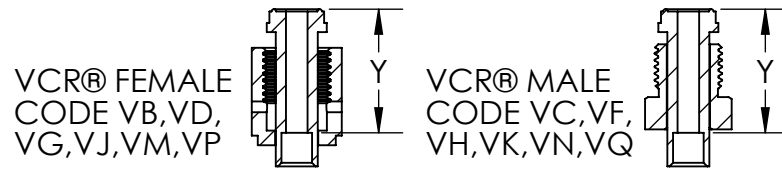
END A & B OPTIONS, SPECIFY IN ALPHABETICAL ORDER (EX: AB, THEN VF)

CODE	TYPE	TUBE Ø	Y LENGTH
AB	WELD ADAPTER	ALL	.42
CC	CF 1.33" FLANGE	ALL	.47*
CF	CF 2-3/4 FLANGE	ALL	.47
KC	KF16 FLANGE	ALL	.52*
KD	KF25 FLANGE	ALL	.52
VB	1/8" VCR® FEMALE	.125	.60
VC	1/8" VCR® MALE	.125	.60
VD	1/4" VCR® FEMALE	.250	1.03
VF	1/4" VCR® MALE	.250	1.03
VG	1/2" VCR® FEMALE	.375	1.19
VH	1/2" VCR® MALE	.375	1.19
VJ	1/2" VCR® FEMALE	.500	1.12
VK	1/2" VCR® MALE	.500	1.12
VM	5/8" VCR® FEMALE	.625	1.15
VN	5/8" VCR® MALE	.625	1.15
VP	3/4" VCR® FEMALE	.750	1.56
VQ	3/4" VCR® MALE	.750	1.56
XF	NO FITTING	ALL	N/A

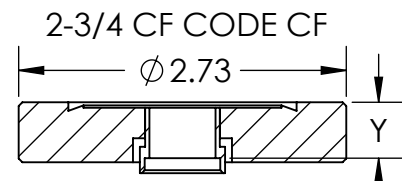


EXAMPLE: FA202CCXFC085
 PINCH-OFF TUBE Ø .125"
 1.33" CF ON END A
 NO FITTING ON END B
 COPPER TUBE 8.5" LONG

- 1- SELECT TUBE DIAMETER
- 2- SELECT END A OPTION
- 3- SELECT END B OPTION
- 4- SELECT TUBE MATERIAL
- 5- SPECIFY TUBE LENGTH

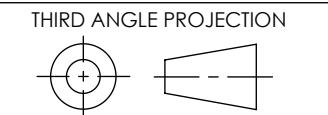


*NECKED FLANGES
USED WITH
Ø .750 TUBES ONLY



VCR® IS A REGISTERED TRADEMARK OF SWAGELOK®

PROPRIETARY AND CONFIDENTIAL
 THE INFORMATION CONTAINED IN THIS DRAWING IS THE SOLE PROPERTY OF SOLID SEALING TECHNOLOGY. ANY REPRODUCTION IN PART OR AS A WHOLE WITHOUT THE WRITTEN PERMISSION OF SOLID SEALING TECHNOLOGY IS PROHIBITED.



TITLE:
PINCH OFF TUBE



REV.	APP'D	DATE	SCALE 5:8	DIMENSIONS IN INCHES [mm]
B1	JF	10/04/2017	MAMS0024-14	

DRAWN	MH	2/10/2016
ENG APPR.	MH	3/15/2016

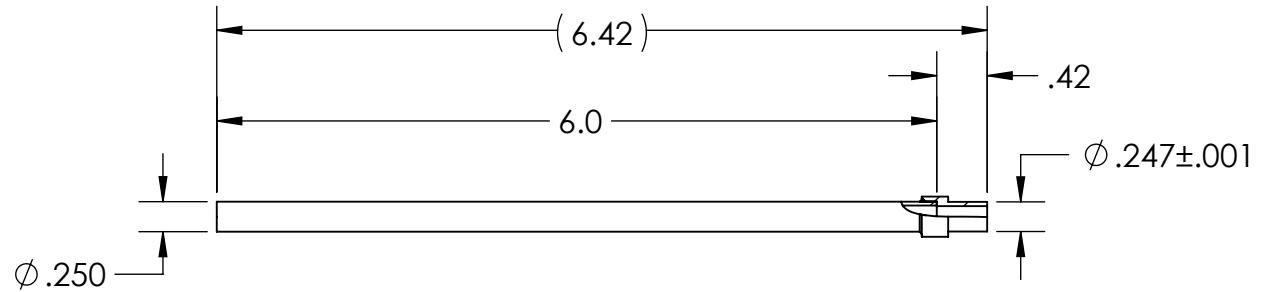
SEE PART NUMBER CONFIGURATOR ABOVE

SALES DWG NO. FA200PTSL REV. B1

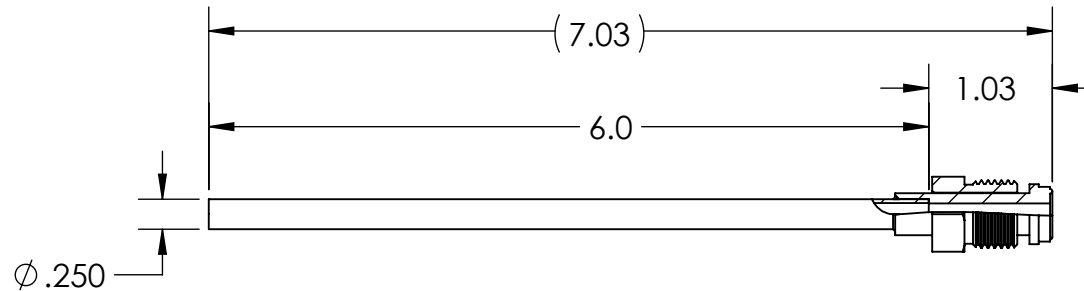
DIMENSIONS ARE FOR REFERENCE ONLY. UNLESS NOTED, NO TOLERANCES ARE IMPLIED. CONSULT SST TO DISCUSS YOUR SPECIFIC REQUIREMENTS.

WWW.SOLIDSEALING.COM

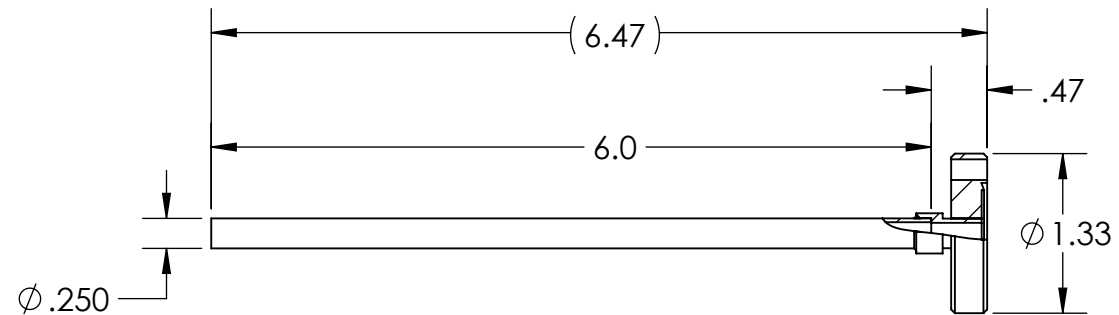
EXAMPLE
 1/4 WELD ADAPTER ON END A
 NO FITTING ON END B
 COPPER TUBE 6.0" LONG
 PART No. FA204ABXFC060



EXAMPLE
 1/4 MALE VCR ON END A
 NO FITTING ON END B
 COPPER TUBE 6.0" LONG
 PART No. FA204VFXFC060



EXAMPLE
 CF1.33 FLANGE ON END A
 NO FITTING ON END B
 COPPER TUBE 6.0" LONG
 PART No. FA204CCXFC060



WWW.SOLIDSEALING.COM



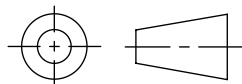
SOLID SEALING TECHNOLOGY, INC.

SALES DWG NO. FA200PTSL REV. B1

PROPRIETARY AND CONFIDENTIAL

THE INFORMATION CONTAINED IN THIS DRAWING IS THE SOLE PROPERTY OF SOLID SEALING TECHNOLOGY. ANY REPRODUCTION IN PART OR AS A WHOLE WITHOUT THE WRITTEN PERMISSION OF SOLID SEALING TECHNOLOGY IS PROHIBITED.

THIRD ANGLE PROJECTION



TITLE:

PINCH OFF TUBE

SEE PART NUMBER CONFIGURATOR

REV.	APP'D	DATE	SCALE 5:8	DIMENSIONS IN INCHES [mm]	DRAWN	MH	2/10/2016
B1	JF	10/04/2016	MS0024-FA204ABXFC060		ENG APPR.	MH	3/15/2016

DIMENSIONS ARE FOR REFERENCE ONLY. UNLESS NOTED, NO TOLERANCES ARE IMPLIED. CONSULT SST TO DISCUSS YOUR SPECIFIC REQUIREMENTS.