

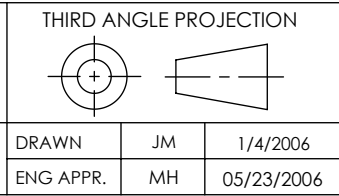
PART NO.	CONDUCTOR MATERIAL	T/C TYPE
FA12329	CHROMEL / ALUMEL	K
FA12329-02	IRON / CONSTANTAN	J
FA12329-03	TUNGSTEN / RHENIUM*	C
FA12329-04	CHROMEL / CONSTANTAN	E

*TYPE C USES COMPENSATING WIRE
 MAXIMUM JUNCTION TEMPERATURE 250°C

RATINGS	
CONDUCTOR MATERIAL:	SEE TABLE AT LEFT
T/C TYPE:	SEE TABLE AT LEFT
PRESSURE:	800 PSIG @ 20°C
TEMPERATURE WITHOUT PLUG:	-260°C TO 230°C
TEMPERATURE WITH PLUG:	-29°C TO 218°C

PROPRIETARY AND CONFIDENTIAL
 THE INFORMATION CONTAINED IN THIS DRAWING IS THE SOLE PROPERTY OF SOLID SEALING TECHNOLOGY. ANY REPRODUCTION IN PART OR AS A WHOLE WITHOUT THE WRITTEN PERMISSION OF SOLID SEALING TECHNOLOGY IS PROHIBITED.

REV.	APP'D	DATE	SCALE 1:1	DIMENSIONS IN INCHES [mm]
A2	MH	11/18/2008	MPCL0045-ST	



TITLE:
DUAL T/C FEEDTHRU

PART NO. (SEE TABLE) REV. A

WWW.SOLIDSEALING.COM

SOLID SEALING TECHNOLOGY, INC.

SALES DWG NO. FA12329SL REV. A2