

-FEEDTHROUGH AVAILABLE WITH 1-41 PINS
 -PINS AVAILABLE IN ANY OF THE ABOVE LOCATIONS. NUMBERS ARE NOT MARKED ON FLANGE, NUMBERS ARE ONLY SHOWN TO INDICATE AVAILABLE PIN LOCATIONS.

****SEE SHEET 3 FOR REQUEST FORM TO BE FILLED OUT BY CUSTOMER WITH REQUIRED PIN LOCATIONS****

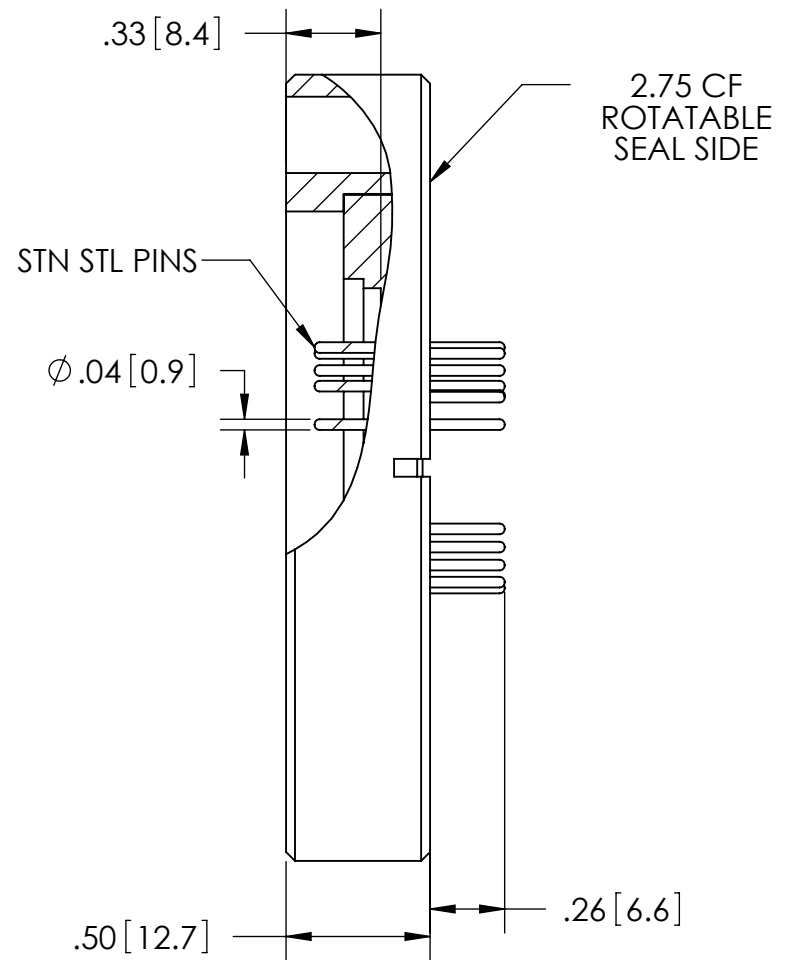
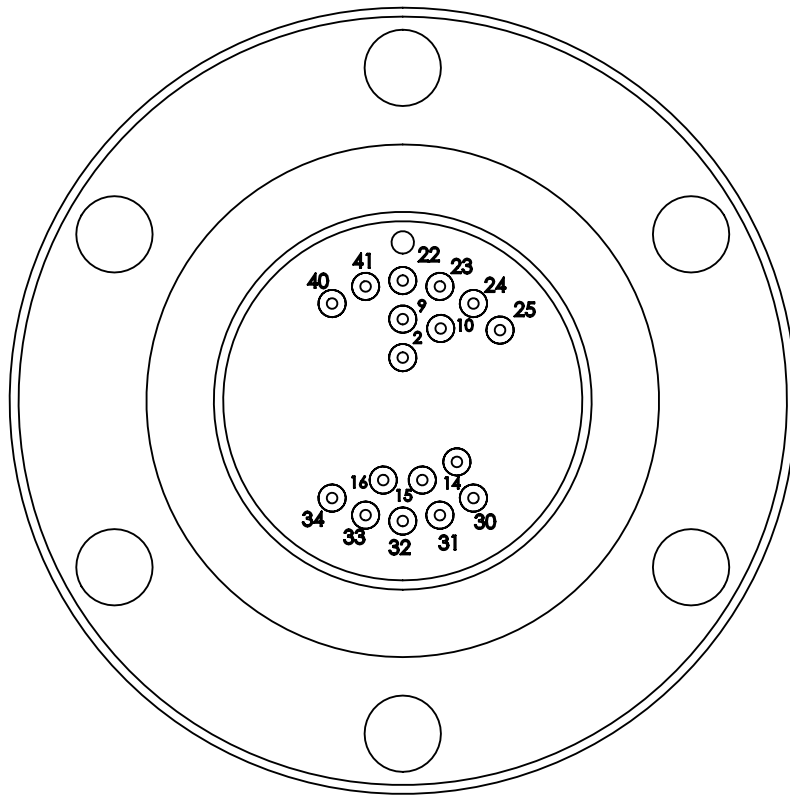
*SEE SHEET 2 FOR DIMENSIONS AND RATINGS

SHEET 1 OF 3

WWW.SOLIDSEALING.COM

PROPRIETARY AND CONFIDENTIAL THE INFORMATION CONTAINED IN THIS DRAWING IS THE SOLE PROPERTY OF SOLID SEALING TECHNOLOGY. ANY REPRODUCTION IN PART OR AS A WHOLE WITHOUT THE WRITTEN PERMISSION OF SOLID SEALING TECHNOLOGY IS PROHIBITED.				THIRD ANGLE PROJECTION 			TITLE: MULTIPIN FEEDTHRU IN CF 2.75		 SOLID SEALING TECHNOLOGY, INC.
REV.	APP'D	DATE	SCALE 1.5:1	DIMENSIONS IN INCHES [mm]	DRAWN	JS	7/24/2008	PART NO. FA19118 REV. A	
A4	JF	05/10/2019	MPDP0086-11SL		ENG APPR.	MH	11/11/2008		SALES DWG NO. FA19118SL REV. A4

DIMENSIONS ARE FOR REFERENCE ONLY. UNLESS NOTED, NO TOLERANCES ARE IMPLIED. CONSULT SST TO DISCUSS YOUR SPECIFIC REQUIREMENTS.



-EXAMPLE ABOVE SHOWS A FEEDTHROUGH WITH 17 PINS AT THE LOCATIONS SHOWN ABOVE, NUMBERS ARE NOT MARKED ON FLANGE. NUMBERS ONLY SHOWN TO INDICATE PIN LOCATIONS.
 -EXAMPLE OF ONE OF MANY AVAILABLE PIN PATTERNS.

*SEE SHEET 1 FOR ALL AVAILABLE PIN LOCATIONS

RATINGS	
VOLTAGE:	1KV DC
CURRENT:	5 AMPS
PRESSURE:	350 PSIG @ 20°C
TEMPERATURE:	-269°C TO 450°C

SHEET 2 OF 3

WWW.SOLIDSEALING.COM



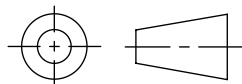
SOLID SEALING TECHNOLOGY, INC.

SALES DWG NO. FA19118SL REV. A4

PROPRIETARY AND CONFIDENTIAL

THE INFORMATION CONTAINED IN THIS DRAWING IS THE SOLE PROPERTY OF SOLID SEALING TECHNOLOGY. ANY REPRODUCTION IN PART OR AS A WHOLE WITHOUT THE WRITTEN PERMISSION OF SOLID SEALING TECHNOLOGY IS PROHIBITED.

THIRD ANGLE PROJECTION



TITLE:

MULTIPIN FEEDTHRU IN CF 2.75

PART NO. FA19118 REV. A

REV.	APP'D	DATE	SCALE 1.5:1	DIMENSIONS IN INCHES [mm]	DRAWN	JS	7/24/2008
A4	JF	05/10/2019	MPDP0086-12		ENG APPR.	MH	11/11/2008

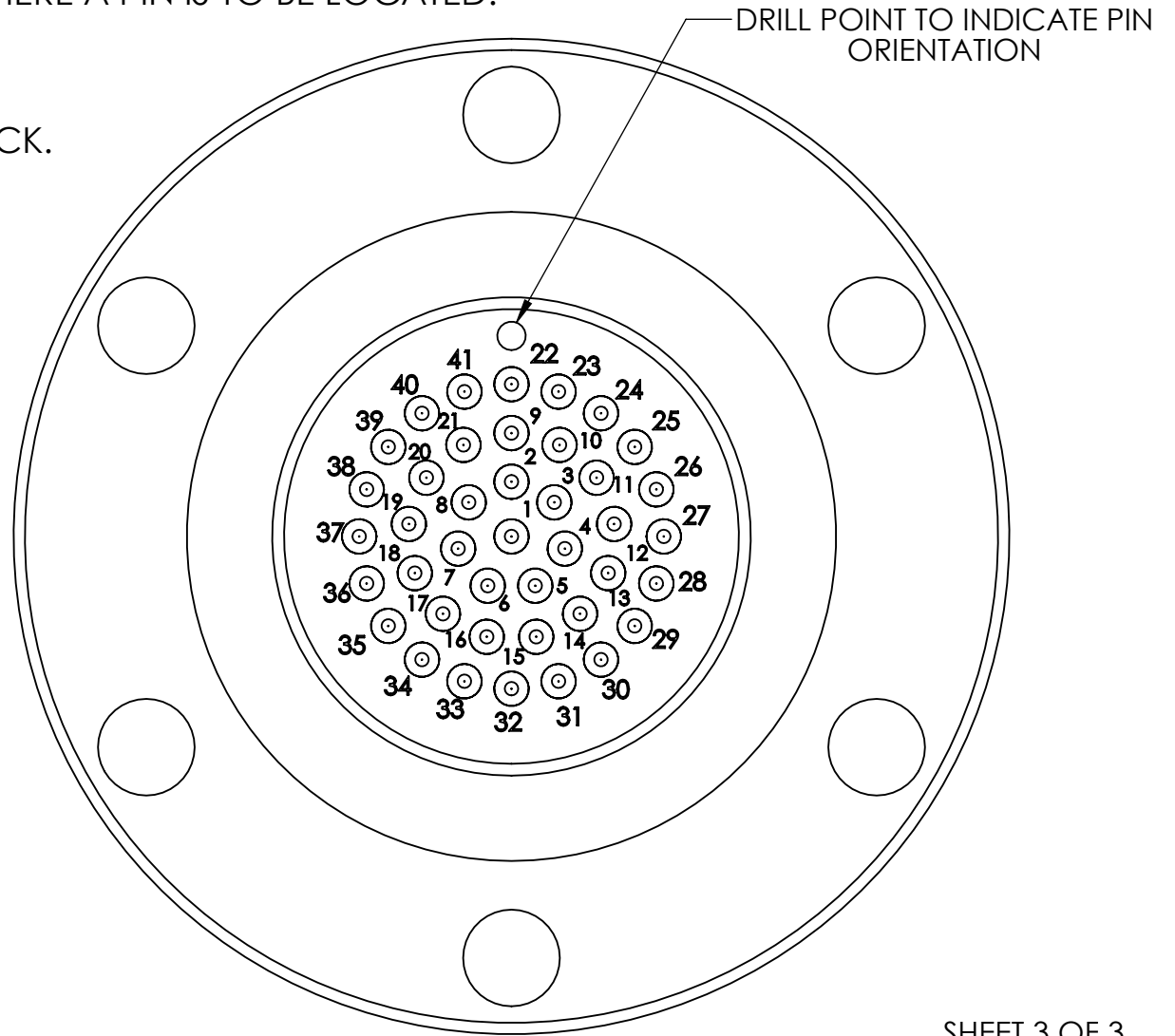
DIMENSIONS ARE FOR REFERENCE ONLY. UNLESS NOTED, NO TOLERANCES ARE IMPLIED. CONSULT SST TO DISCUSS YOUR SPECIFIC REQUIREMENTS.

STEP I:

SELECT NUMBER OF PINS AND LOCATIONS FOR FEEDTHROUGH BY MARKING AN "X" IN THE CIRCLE WHERE A PIN IS TO BE LOCATED.

STEP II:

REVIEW AND SEND TO SST FOR FEEDBACK.



SHEET 3 OF 3

WWW.SOLIDSEALING.COM



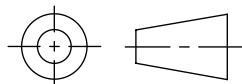
SOLID SEALING TECHNOLOGY, INC.

SALES DWG NO. FA19118SL REV. A4

PROPRIETARY AND CONFIDENTIAL

THE INFORMATION CONTAINED IN THIS DRAWING IS THE SOLE PROPERTY OF SOLID SEALING TECHNOLOGY. ANY REPRODUCTION IN PART OR AS A WHOLE WITHOUT THE WRITTEN PERMISSION OF SOLID SEALING TECHNOLOGY IS PROHIBITED.

THIRD ANGLE PROJECTION



TITLE:

MULTIPIN FEEDTHRU IN CF 2.75

PART NO. FA19118 REV. A

REV.	APP'D	DATE	SCALE 1:1	DIMENSIONS IN INCHES [mm]	DRAWN	JS	7/24/2008
A4	JF	05/10/2019	MPDP0086-11SL		ENG APPR.	MH	11/11/2008

DIMENSIONS ARE FOR REFERENCE ONLY. UNLESS NOTED, NO TOLERANCES ARE IMPLIED. CONSULT SST TO DISCUSS YOUR SPECIFIC REQUIREMENTS.