

PART NUMBER CONFIGURATOR

SEE SHEET 2 FOR MORE EXAMPLES

TUBE CODE & DIAMETER	
01	.062"
02	.125"
03	.187"
04	.250"
06	.375"
08	.500"
10	.625"
12	.750"

MATERIAL CODE	
C	COPPER CDA 101
N	NICKEL 200

FA2 02 CC XF C 085

TOTAL LENGTH EQUALS TUBE LENGTH XX.X + Y DIMENSIONS FOR ENDS A&B

PINCH-OFF DESIGNATOR
NOT A VARIABLE

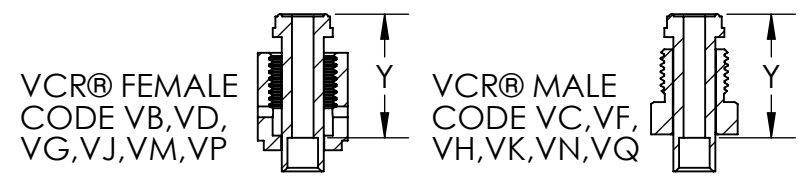
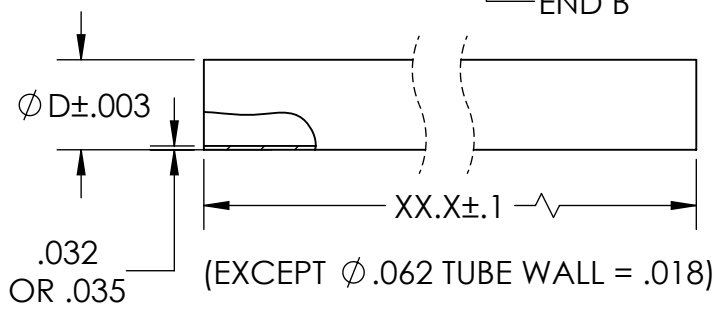
TUBE DIAMETER

END A

END B

TUBE LENGTH, INCHES & TENTHS
OMIT THE DECIMAL POINT
USE LEADING ZERO IF < 10.0"

TUBE MATERIAL

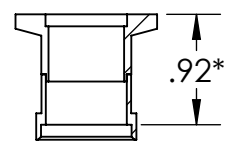
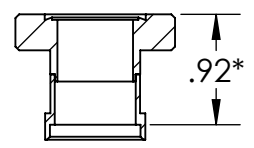
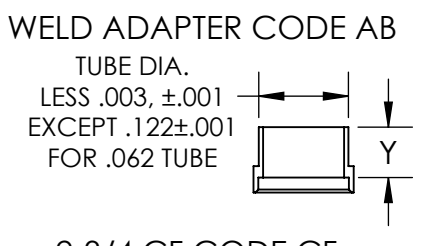
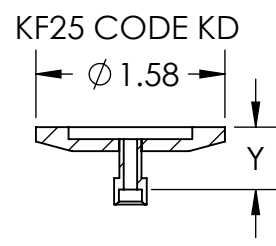
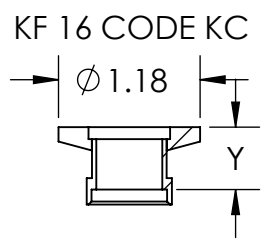
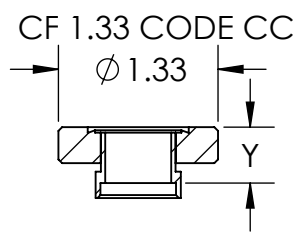


EXAMPLE: FA202CCXFC085
 PINCH-OFF TUBE $\phi .125"$
 1.33" CF ON END A
 NO FITTING ON END B
 COPPER TUBE 8.5" LONG

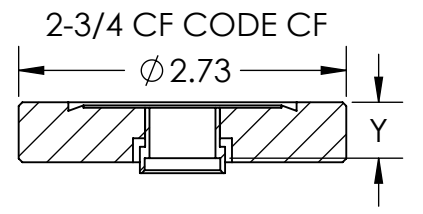
- 1- SELECT TUBE DIAMETER
- 2- SELECT END A OPTION
- 3- SELECT END B OPTION
- 4- SELECT TUBE MATERIAL
- 5- SPECIFY TUBE LENGTH

END A & B OPTIONS, SPECIFY IN ALPHABETICAL ORDER (EX: AB, THEN VF)

CODE	TYPE	TUBE ϕ	Y LENGTH
AB	WELD ADAPTER	ALL	.42
CC	CF 1.33" FLANGE	ALL	.47*
CF	CF 2-3/4 FLANGE	ALL	.47
KC	KF16 FLANGE	ALL	.52*
KD	KF25 FLANGE	ALL	.52
VB	1/8" VCR@ FEMALE	.125	.60
VC	1/8" VCR@ MALE	.125	.60
VD	1/4" VCR@ FEMALE	.250	1.03
VF	1/4" VCR@ MALE	.250	1.03
VG	1/2" VCR@ FEMALE	.375	1.19
VH	1/2" VCR@ MALE	.375	1.19
VJ	1/2" VCR@ FEMALE	.500	1.12
VK	1/2" VCR@ MALE	.500	1.12
VM	5/8" VCR@ FEMALE	.625	1.15
VN	5/8" VCR@ MALE	.625	1.15
VP	3/4" VCR@ FEMALE	.750	1.56
VQ	3/4" VCR@ MALE	.750	1.56
XF	NO FITTING	ALL	N/A

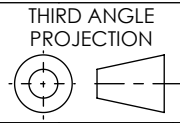


*NECKED FLANGES
USED WITH
 $\phi .750$ TUBES ONLY



VCR@ IS A REGISTERED TRADEMARK OF SWAGelok@

PROPRIETARY AND CONFIDENTIAL
 THE INFORMATION CONTAINED IN THIS DRAWING IS THE SOLE PROPERTY OF SOLID SEALING TECHNOLOGY. ANY REPRODUCTION IN PART OR AS A WHOLE WITHOUT THE WRITTEN PERMISSION OF SOLID SEALING TECHNOLOGY IS PROHIBITED.



TITLE: **PINCH OFF TUBE**

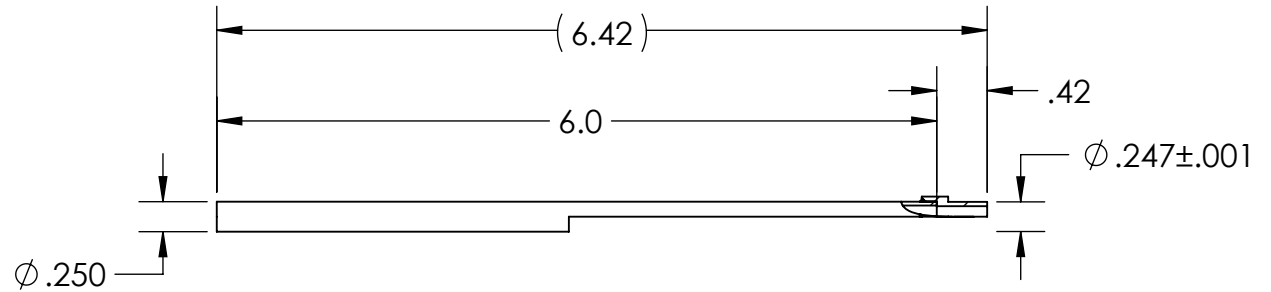


REV.	APP'D	DATE	SCALE 5:8	DIMENSIONS IN INCHES [mm]	DRAWN	MH	2/10/2016
C1	OG	09/05/2018	MAMS0024-14		ENG APPR.	MH	3/15/2016

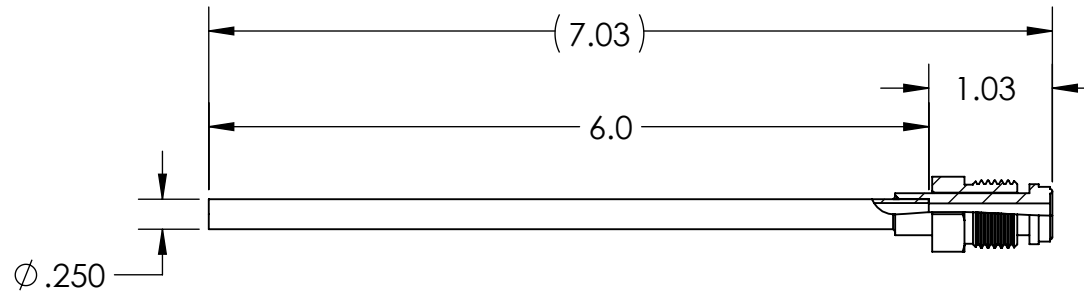
SEE PART NUMBER CONFIGURATOR ABOVE

WWW.SOLIDSEALING.COM
 SALES DWG NO. FA200PTSL REV. C1

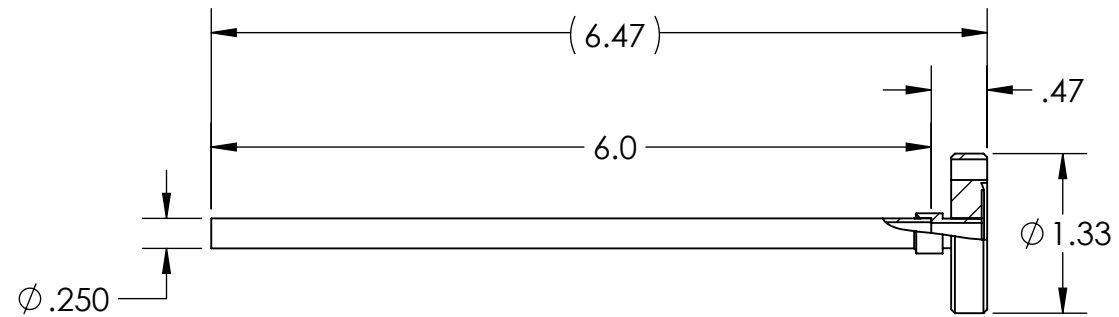
EXAMPLE
 1/4 WELD ADAPTER ON END A
 NO FITTING ON END B
 COPPER TUBE 6.0" LONG
 PART No. FA204ABXFC060



EXAMPLE
 1/4 MALE VCR ON END A
 NO FITTING ON END B
 COPPER TUBE 6.0" LONG
 PART No. FA204VFXFC060



EXAMPLE
 CF1.33 FLANGE ON END A
 NO FITTING ON END B
 COPPER TUBE 6.0" LONG
 PART No. FA204CCXFC060



PROPRIETARY AND CONFIDENTIAL THE INFORMATION CONTAINED IN THIS DRAWING IS THE SOLE PROPERTY OF SOLID SEALING TECHNOLOGY. ANY REPRODUCTION IN PART OR AS A WHOLE WITHOUT THE WRITTEN PERMISSION OF SOLID SEALING TECHNOLOGY IS PROHIBITED.				THIRD ANGLE PROJECTION 		TITLE: PINCH OFF TUBE			
REV.	APP'D	DATE	SCALE 5:8	DIMENSIONS IN INCHES [mm]	DRAWN	MH	2/10/2016	SEE PART NUMBER CONFIGURATOR	WWW.SOLIDSEALING.COM
C1	OG	09/05/2018			ENG APPR.	MH	3/15/2016		SALES DWG NO. FA200PTSL REV. C1

DIMENSIONS ARE FOR REFERENCE ONLY. UNLESS NOTED, NO TOLERANCES ARE IMPLIED. CONSULT SST TO DISCUSS YOUR SPECIFIC REQUIREMENTS.