

# PART NUMBER CONFIGURATOR

SEE SHEET 2 FOR MORE EXAMPLES

| TUBE CODE & DIAMETER |       |
|----------------------|-------|
| 01                   | .062" |
| 02                   | .125" |
| 03                   | .187" |
| 04                   | .250" |
| 06                   | .375" |
| 08                   | .500" |
| 10                   | .625" |
| 12                   | .750" |

| MATERIAL CODE |                |
|---------------|----------------|
| C             | COPPER CDA 101 |
| N             | NICKEL 200     |

**FA2 02 CC XF C 085**

**TOTAL LENGTH EQUALS TUBE LENGTH XX.X + Y DIMENSIONS FOR ENDS A&B**

PINCH-OFF DESIGNATOR  
NOT A VARIABLE

TUBE DIAMETER

END A

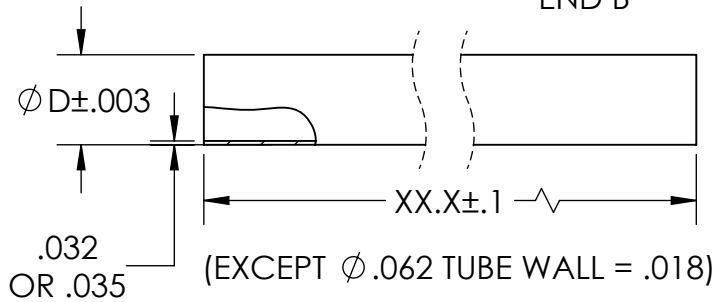
END B

TUBE LENGTH, INCHES & TENTHS  
OMIT THE DECIMAL POINT  
USE LEADING ZERO IF < 10.0"

TUBE MATERIAL

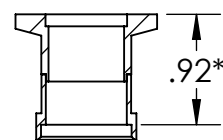
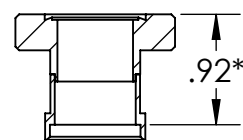
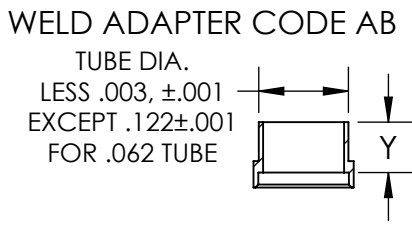
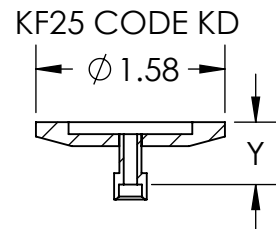
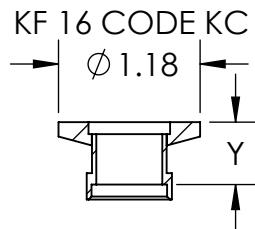
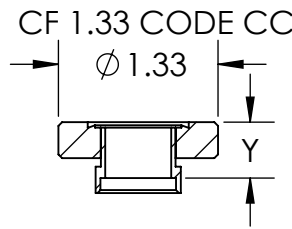
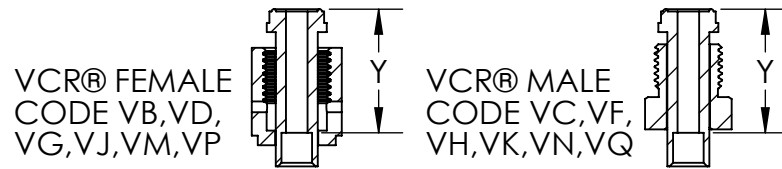
END A & B OPTIONS, SPECIFY IN ALPHABETICAL ORDER (EX: AB, THEN VF)

| CODE | TYPE             | TUBE Ø | Y LENGTH |
|------|------------------|--------|----------|
| AB   | WELD ADAPTER     | ALL    | .42      |
| CC   | CF 1.33" FLANGE  | ALL    | .47*     |
| CF   | CF 2-3/4 FLANGE  | ALL    | .47      |
| KC   | KF16 FLANGE      | ALL    | .52*     |
| KD   | KF25 FLANGE      | ALL    | .52      |
| VB   | 1/8" VCR® FEMALE | .125   | .60      |
| VC   | 1/8" VCR® MALE   | .125   | .60      |
| VD   | 1/4" VCR® FEMALE | .250   | 1.03     |
| VF   | 1/4" VCR® MALE   | .250   | 1.03     |
| VG   | 1/2" VCR® FEMALE | .375   | 1.19     |
| VH   | 1/2" VCR® MALE   | .375   | 1.19     |
| VJ   | 1/2" VCR® FEMALE | .500   | 1.12     |
| VK   | 1/2" VCR® MALE   | .500   | 1.12     |
| VM   | 5/8" VCR® FEMALE | .625   | 1.15     |
| VN   | 5/8" VCR® MALE   | .625   | 1.15     |
| VP   | 3/4" VCR® FEMALE | .750   | 1.56     |
| VQ   | 3/4" VCR® MALE   | .750   | 1.56     |
| XF   | NO FITTING       | ALL    | N/A      |

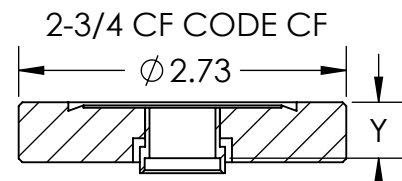


**EXAMPLE: FA202CCXFC085**  
 PINCH-OFF TUBE Ø .125"  
 1.33" CF ON END A  
 NO FITTING ON END B  
 COPPER TUBE 8.5" LONG

- 1- SELECT TUBE DIAMETER
- 2- SELECT END A OPTION
- 3- SELECT END B OPTION
- 4- SELECT TUBE MATERIAL
- 5- SPECIFY TUBE LENGTH

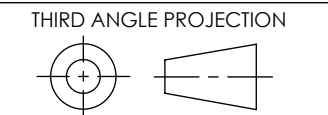


\*NECKED FLANGES  
USED WITH  
Ø .750 TUBES ONLY



VCR® IS A REGISTERED TRADEMARK OF SWAGelok®

PROPRIETARY AND CONFIDENTIAL  
 THE INFORMATION CONTAINED IN THIS DRAWING IS THE SOLE PROPERTY OF SOLID SEALING TECHNOLOGY. ANY REPRODUCTION IN PART OR AS A WHOLE WITHOUT THE WRITTEN PERMISSION OF SOLID SEALING TECHNOLOGY IS PROHIBITED.



TITLE:  
**PINCH OFF TUBE**



| REV. | APP'D | DATE       | SCALE 5:8   | DIMENSIONS IN INCHES [mm] |
|------|-------|------------|-------------|---------------------------|
| C1   | OG    | 09/05/2018 | MAMS0024-14 |                           |

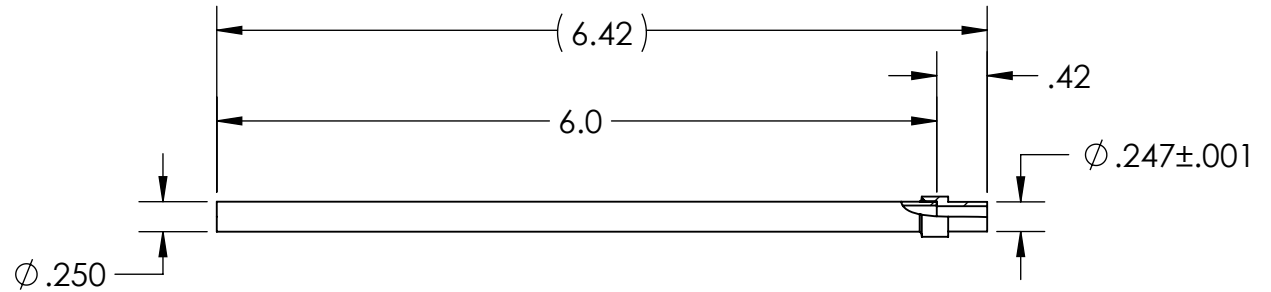
| DRAWN     | MH | 2/10/2016 |
|-----------|----|-----------|
| ENG APPR. | MH | 3/15/2016 |

SEE PART NUMBER CONFIGURATOR ABOVE

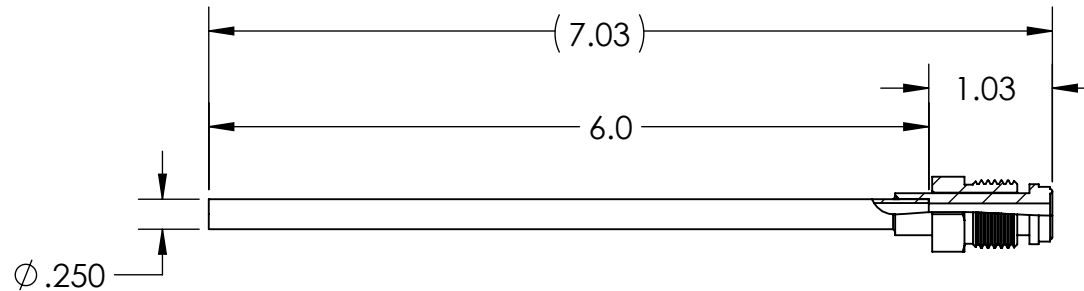
SALES DWG NO. FA200PTSL REV. C1

WWW.SOLIDSEALING.COM

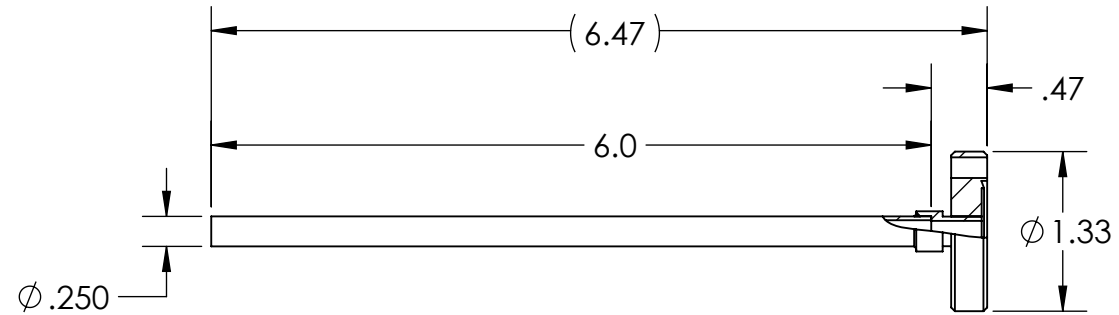
EXAMPLE  
 1/4 WELD ADAPTER ON END A  
 NO FITTING ON END B  
 COPPER TUBE 6.0" LONG  
 PART No. FA204ABXFC060



EXAMPLE  
 1/4 MALE VCR ON END A  
 NO FITTING ON END B  
 COPPER TUBE 6.0" LONG  
 PART No. FA204VFXFC060



EXAMPLE  
 CF1.33 FLANGE ON END A  
 NO FITTING ON END B  
 COPPER TUBE 6.0" LONG  
 PART No. FA204CCXFC060



WWW.SOLIDSEALING.COM



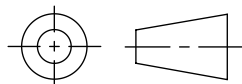
SOLID SEALING TECHNOLOGY, INC.

SALES DWG NO. FA200PTSL REV. C1

PROPRIETARY AND CONFIDENTIAL

THE INFORMATION CONTAINED IN THIS DRAWING IS THE  
 SOLE PROPERTY OF SOLID SEALING TECHNOLOGY. ANY  
 REPRODUCTION IN PART OR AS A WHOLE WITHOUT THE WRITTEN  
 PERMISSION OF SOLID SEALING TECHNOLOGY IS PROHIBITED.

THIRD ANGLE PROJECTION



TITLE:

PINCH OFF TUBE

SEE PART NUMBER CONFIGURATOR

| REV. | APP'D | DATE       | SCALE 5:8   | DIMENSIONS IN | DRAWN | MH        | 2/10/2016 |
|------|-------|------------|-------------|---------------|-------|-----------|-----------|
| C1   | OG    | 09/05/2016 | INCHES [mm] | ENG APPR.     | MH    | 3/15/2016 |           |

**DIMENSIONS ARE FOR REFERENCE ONLY. UNLESS NOTED, NO TOLERANCES ARE IMPLIED. CONSULT SST TO DISCUSS YOUR SPECIFIC REQUIREMENTS.**