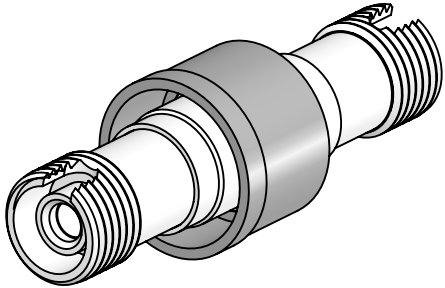


PERFORMANCE SPECIFICATIONS
.35 dB LOSS PER JUNCTION @ 850 nm TYPICAL, .5 dB MAX (@ ROOM TEMPERATURE)
OPERATING TEMPERATURE: -40°C TO 150°C
200°C BAKEOUT FOR 1 HOUR
LEAK RATE <1 X 10E-9 ATM-CC/SEC (He)



WWW.SOLIDSEALING.COM



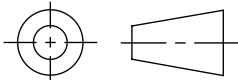
SOLID SEALING TECHNOLOGY, INC.

SALES DWG NO. FA35761SL REV. B1

PROPRIETARY AND CONFIDENTIAL

THE INFORMATION CONTAINED IN THIS DRAWING IS THE SOLE PROPERTY OF SOLID SEALING TECHNOLOGY. ANY REPRODUCTION IN PART OR AS A WHOLE WITHOUT THE WRITTEN PERMISSION OF SOLID SEALING TECHNOLOGY IS PROHIBITED.

THIRD ANGLE PROJECTION



TITLE:

MM FEEDTHROUGH, FC-FC

PART NO. FA35761 REV. B

REV.	APP'D	DATE	SCALE 2:1	DIMENSIONS IN INCHES [mm]	DRAWN	HJ	10/31/2018
B1	JF	08/26/2019	FOFDN001-16		ENG APPR.	HJ	10/31/2018

**DIMENSIONS ARE FOR REFERENCE ONLY. UNLESS NOTED, NO TOLERANCES ARE IMPLIED. CONSULT SST TO DISCUSS YOUR SPECIFIC REQUIREMENTS.**