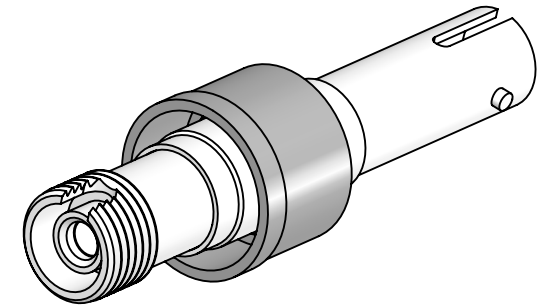


PERFORMANCE SPECIFICATIONS

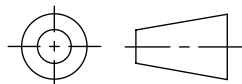
.35 dB LOSS PER JUNCTION @ 850 nm TYPICAL, .5 dB MAX (@ROOM TEMPERATURE)
OPERATING TEMPERATURE: -40°C TO 150°C
200°C BAKEOUT FOR 1 HOUR
LEAK RATE <1 X 10E-9 ATM-CC/SEC (He)



PROPRIETARY AND CONFIDENTIAL

THE INFORMATION CONTAINED IN THIS DRAWING IS THE SOLE PROPERTY OF SOLID SEALING TECHNOLOGY. ANY REPRODUCTION IN PART OR AS A WHOLE WITHOUT THE WRITTEN PERMISSION OF SOLID SEALING TECHNOLOGY IS PROHIBITED.

THIRD ANGLE PROJECTION



TITLE:

MM FEEDTHROUGH, FC-ST

WWW.SOLIDSEALING.COM



SOLID SEALING TECHNOLOGY, INC.

REV.	APP'D	DATE	SCALE 2:1	DIMENSIONS IN INCHES [mm]	DRAWN	JF	11/27/2018
B1	JF	08/26/2019	FOFDN001-20		ENG APPR.	JF	11/27/2018

PART NO. FA35877 REV. B

SALES DWG NO. FA35877SL REV. B1

DIMENSIONS ARE FOR REFERENCE ONLY. UNLESS NOTED, NO TOLERANCES ARE IMPLIED. CONSULT SST TO DISCUSS YOUR SPECIFIC REQUIREMENTS.