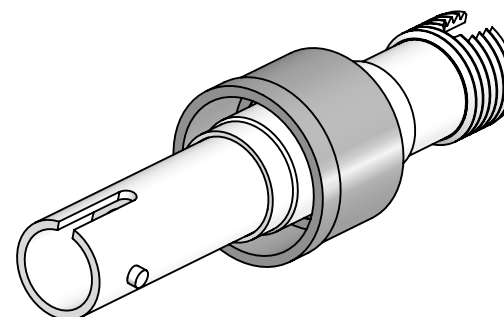


PERFORMANCE SPECIFICATIONS

.3 dB LOSS PER JUNCTION @ 1550 nm TYPICAL,
.45 dB MAX (@ ROOM TEMPERATURE)

OPERATING TEMPERATURE: -40°C TO 150°C

LEAK RATE <1 X 10E-9 ATM-CC/SEC (He)

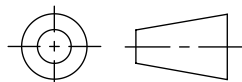


WWW.SOLIDSEALING.COM

PROPRIETARY AND CONFIDENTIAL

THE INFORMATION CONTAINED IN THIS DRAWING IS THE
SOLE PROPERTY OF SOLID SEALING TECHNOLOGY. ANY
REPRODUCTION IN PART OR AS A WHOLE WITHOUT THE WRITTEN
PERMISSION OF SOLID SEALING TECHNOLOGY IS PROHIBITED.

THIRD ANGLE PROJECTION



TITLE:

SM FEEDTHROUGH, ST-FC

REV.	APP'D	DATE	SCALE 2:1	DIMENSIONS IN INCHES [mm]	DRAWN	HJ	10/31/2018
C1	JF	03/15/2019	fofdn003-15		ENG APPR.	HJ	10/31/2018

PART NO. FA37638 REV. C

SST
SOLID SEALING TECHNOLOGY, INC.

SALES DWG NO. FA37638SL REV. C1

DIMENSIONS ARE FOR REFERENCE ONLY. UNLESS NOTED, NO TOLERANCES ARE IMPLIED. CONSULT SST TO DISCUSS YOUR SPECIFIC REQUIREMENTS.