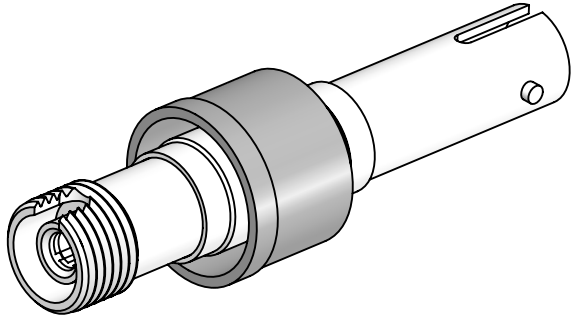


PERFORMANCE SPECIFICATIONS	
.3 dB LOSS PER JUNCTION @ 1550 nm TYPICAL, .45dB MAX (@ ROOM TEMPERATURE)	
OPERATING TEMPERATURE: -40°C TO 150°C	
LEAK RATE <1 X 10E-9 ATM-CC/SEC (He)	



WWW.SOLIDSEALING.COM

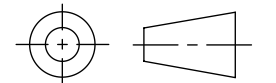


SOLID SEALING TECHNOLOGY, INC.

SALES DWG NO. FA37643SL REV. C1

PROPRIETARY AND CONFIDENTIAL
THE INFORMATION CONTAINED IN THIS DRAWING IS THE SOLE PROPERTY OF SOLID SEALING TECHNOLOGY. ANY REPRODUCTION IN PART OR AS A WHOLE WITHOUT THE WRITTEN PERMISSION OF SOLID SEALING TECHNOLOGY IS PROHIBITED.

THIRD ANGLE PROJECTION



TITLE:
SM FEEDTHROUGH, FC-ST

REV.	APP'D	DATE	SCALE 2:1	DIMENSIONS IN INCHES [mm]
C1	JF	03/15/2019	fofdn003-20	

DRAWN	JF	11/01/2018
ENG APPR.	JF	11/01/2018

PART NO. FA37643 REV. C

DIMENSIONS ARE FOR REFERENCE ONLY. UNLESS NOTED, NO TOLERANCES ARE IMPLIED. CONSULT SST TO DISCUSS YOUR SPECIFIC REQUIREMENTS.