

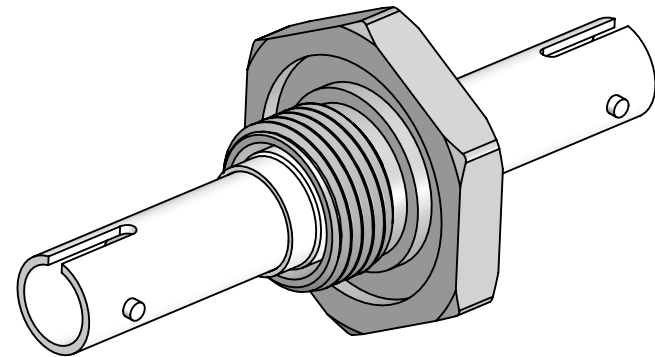
PERFORMANCE SPECIFICATIONS

.3 dB LOSS PER JUNCTION @ 1550 nm TYPICAL,
.45dB MAX (@ ROOM TEMPERATURE)

OPERATING TEMPERATURE: -40°C TO 150°C

LEAK RATE <1 X 10E-9 ATM-CC/SEC (He)

***SEE SHEET 2 FOR MOUNTING DETAILS**



WWW.SOLIDSEALING.COM



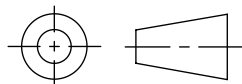
SOLID SEALING TECHNOLOGY, INC.

SALES DWG NO. FA38324SL REV. A2

PROPRIETARY AND CONFIDENTIAL

THE INFORMATION CONTAINED IN THIS DRAWING IS THE SOLE PROPERTY OF SOLID SEALING TECHNOLOGY. ANY REPRODUCTION IN PART OR AS A WHOLE WITHOUT THE WRITTEN PERMISSION OF SOLID SEALING TECHNOLOGY IS PROHIBITED.

THIRD ANGLE PROJECTION



TITLE:

SM FEEDTHROUGH, ST-ST

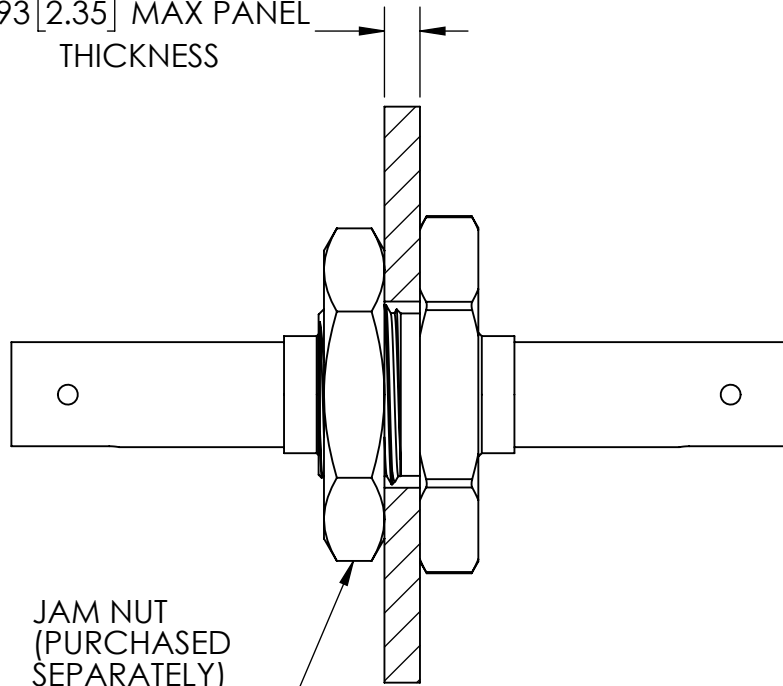
PART NO. FA38324 REV. A

REV.	APP'D	DATE	SCALE 2:1	DIMENSIONS IN INCHES [mm]	DRAWN	JF	11/01/2018
A2	JF	03/12/2019	fofdn003-23		ENG APPR.	JF	11/01/2018

DIMENSIONS ARE FOR REFERENCE ONLY. UNLESS NOTED, NO TOLERANCES ARE IMPLIED. CONSULT SST TO DISCUSS YOUR SPECIFIC REQUIREMENTS.

JAM NUT PANEL MOUNTING CONFIGURATION

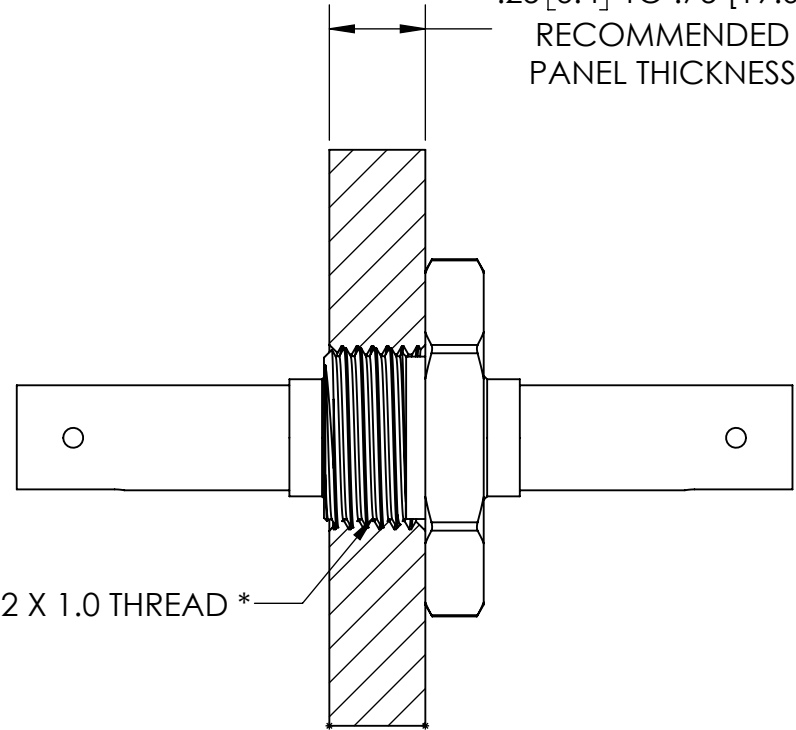
.093 [2.35] MAX PANEL THICKNESS



JAM NUT
(PURCHASED SEPARATELY)
SEE FP38340

THREADED PANEL MOUNTING CONFIGURATION

.25 [6.4] TO .75 [19.05]
RECOMMENDED
PANEL THICKNESS



M12 X 1.0 THREAD *

*IF THREAD IS NOT TAPPED THROUGH, ITS DEPTH MUST BE AT LEAST .264" [6.71].

WWW.SOLIDSEALING.COM



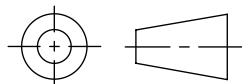
SOLID SEALING TECHNOLOGY, INC.

SALES DWG NO. FA38324SL REV. A2

PROPRIETARY AND CONFIDENTIAL

THE INFORMATION CONTAINED IN THIS DRAWING IS THE SOLE PROPERTY OF SOLID SEALING TECHNOLOGY. ANY REPRODUCTION IN PART OR AS A WHOLE WITHOUT THE WRITTEN PERMISSION OF SOLID SEALING TECHNOLOGY IS PROHIBITED.

THIRD ANGLE PROJECTION



TITLE:

SM FEEDTHROUGH, ST-ST

PART NO. FA38324 REV. A

REV.	APP'D	DATE	SCALE 1:1	DIMENSIONS IN	DRAWN	JF	11/01/2018
A2	JF	03/12/2019	1:1	INCHES [mm]	ENG APPR.	JF	11/01/2018

DIMENSIONS ARE FOR REFERENCE ONLY. UNLESS NOTED, NO TOLERANCES ARE IMPLIED. CONSULT SST TO DISCUSS YOUR SPECIFIC REQUIREMENTS.