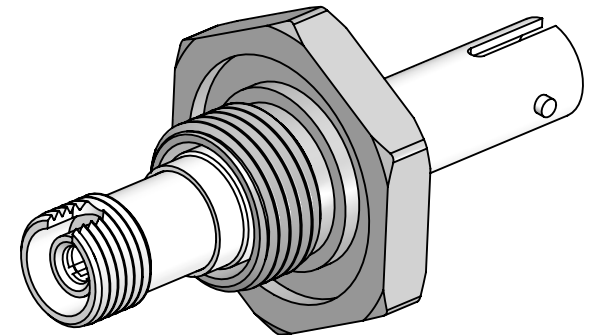


PERFORMANCE SPECIFICATIONS
.3 dB LOSS PER JUNCTION @ 1550 nm TYPICAL, .45dB MAX (@ ROOM TEMPERATURE)
OPERATING TEMPERATURE: -40°C TO 150°C
LEAK RATE <1 X 10E-9 ATM-CC/SEC (He)

**\*SEE SHEET 2 FOR MOUNTING DETAILS**



[WWW.SOLIDSEALING.COM](http://WWW.SOLIDSEALING.COM)



**SOLID SEALING TECHNOLOGY, INC.**

SALES DWG NO. FA38327SL REV. A2

PROPRIETARY AND CONFIDENTIAL

THE INFORMATION CONTAINED IN THIS DRAWING IS THE SOLE PROPERTY OF SOLID SEALING TECHNOLOGY. ANY REPRODUCTION IN PART OR AS A WHOLE WITHOUT THE WRITTEN PERMISSION OF SOLID SEALING TECHNOLOGY IS PROHIBITED.

THIRD ANGLE PROJECTION



TITLE:

SM FEEDTHROUGH, FC-ST

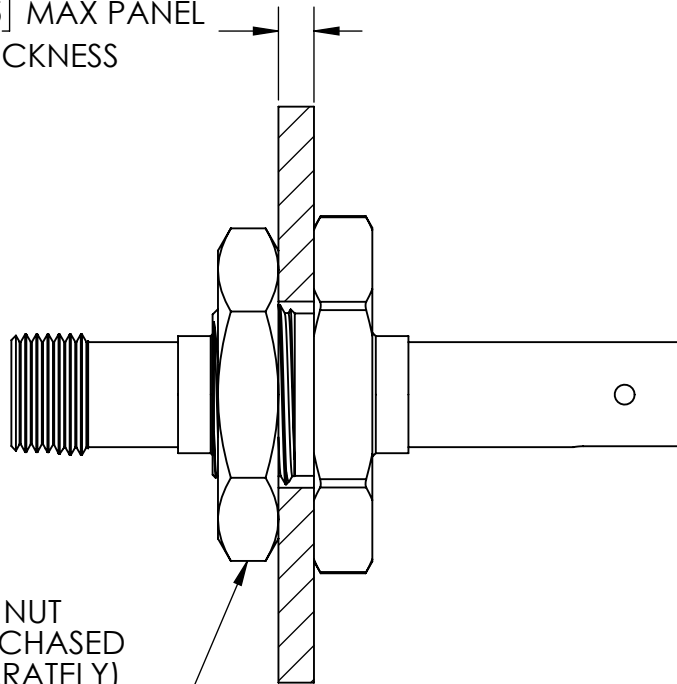
REV.	APP'D	DATE	SCALE 2:1	DIMENSIONS IN INCHES [mm]	DRAWN	JF	11/02/2018
A2	JF	03/12/2019	fofdn003-26		ENG APPR.	JF	11/02/2018

PART NO. FA38327 REV. A

**DIMENSIONS ARE FOR REFERENCE ONLY. UNLESS NOTED, NO TOLERANCES ARE IMPLIED. CONSULT SST TO DISCUSS YOUR SPECIFIC REQUIREMENTS.**

### JAM NUT PANEL MOUNTING CONFIGURATION

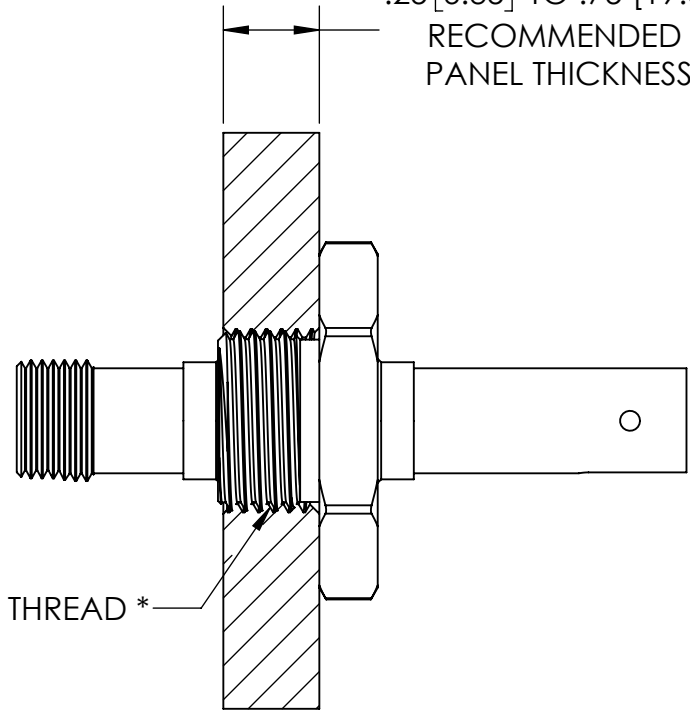
.093 [2.35] MAX PANEL THICKNESS



JAM NUT  
(PURCHASED SEPARATELY)  
SEE FP38340

### THREADED PANEL MOUNTING CONFIGURATION

.25 [6.35] TO .75 [19.05]  
RECOMMENDED  
PANEL THICKNESS



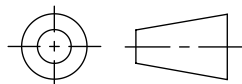
M12 X 1.0 THREAD \*

\*IF THREAD IS NOT TAPPED THROUGH, IT'S DEPTH MUST BE AT LEAST .264" [6.71].

PROPRIETARY AND CONFIDENTIAL

THE INFORMATION CONTAINED IN THIS DRAWING IS THE SOLE PROPERTY OF SOLID SEALING TECHNOLOGY. ANY REPRODUCTION IN PART OR AS A WHOLE WITHOUT THE WRITTEN PERMISSION OF SOLID SEALING TECHNOLOGY IS PROHIBITED.

THIRD ANGLE PROJECTION



TITLE:

SM FEEDTHROUGH, FC-ST

[WWW.SOLIDSEALING.COM](http://WWW.SOLIDSEALING.COM)



SOLID SEALING TECHNOLOGY, INC.

REV.	APP'D	DATE	SCALE 1:1	DIMENSIONS IN	DRAWN	JF	11/02/2018
A2	JF	03/12/2019	1/2	INCHES [mm]	ENG APPR.	JF	11/02/2018

PART NO. FA38327 REV. A

SALES DWG NO. FA38327SL REV. A2

**DIMENSIONS ARE FOR REFERENCE ONLY. UNLESS NOTED, NO TOLERANCES ARE IMPLIED. CONSULT SST TO DISCUSS YOUR SPECIFIC REQUIREMENTS.**