

PLUGS SOLD SEPARATELY:  
 -VACUUM SIDE PEEK PLUG FA13605  
 -AIR SIDE PLUG KT14878

PERFORMANCE SPECIFICATIONS	
VOLTAGE:	500V DC
CURRENT:	3 AMPS
TEMPERATURE:	-25°C TO 205°C

**\*\*SEE SHEET 2 FOR MOUNTING DETAILS\*\***

PROPRIETARY AND CONFIDENTIAL THE INFORMATION CONTAINED IN THIS DRAWING IS THE SOLE PROPERTY OF SOLID SEALING TECHNOLOGY. ANY REPRODUCTION IN PART OR AS A WHOLE WITHOUT THE WRITTEN PERMISSION OF SOLID SEALING TECHNOLOGY IS PROHIBITED.				THIRD ANGLE PROJECTION 		TITLE <b>25 PIN SUB D CONNECTOR</b>			
REV.	APP'D	DATE	SCALE 3:2	DIMENSIONS IN INCHES [mm]	DRAWN	CW	7/31/2020	PART NO. FA41156 REV. C WWW.SOLIDSEALING.COM	
C2	CW	11/12/2020	CL0692-11SM FA41156	ENG APPR.	HJ	10/23/2020	SALES DWG NO. FA41156SL REV. C2		

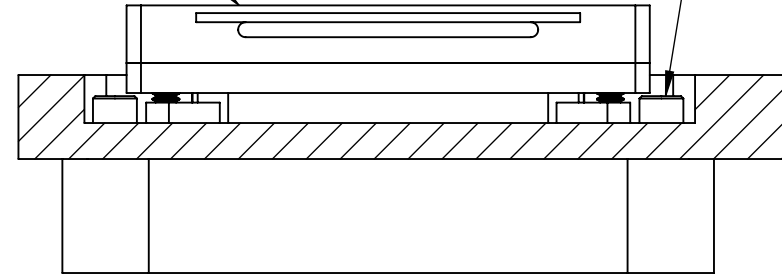
**DIMENSIONS ARE FOR REFERENCE ONLY. UNLESS NOTED, NO TOLERANCES ARE IMPLIED. CONSULT SST TO DISCUSS YOUR SPECIFIC REQUIREMENTS.**

# FA41156 MOUNTING DETAILS

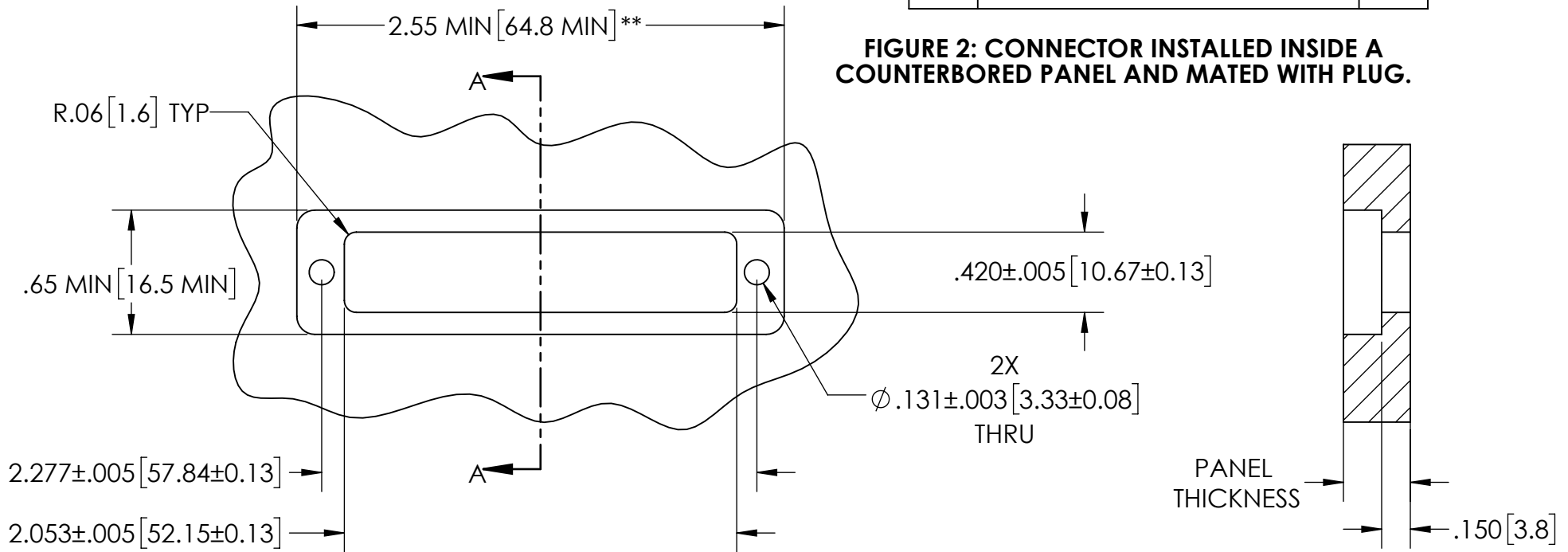
CONNECTOR FA41156 IS DESIGNED TO MATE WITH A STANDARD MIL-DTL-24308 PLUG ON BOTH SIDES. IT IS SIZED TO USE (2) STANDARD #4-40 SOCKET HEAD CAP SCREWS TO INSTALL THE CONNECTOR INSIDE THE PANEL. SEE FIGURE 1 FOR PANEL CUTOUT DIMENSIONS.

OPTIONAL VACUUM SIDE PEEK PLUG FA13605

PANEL MOUNT SCREW (SOCKET HEAD CAP)



**FIGURE 2: CONNECTOR INSTALLED INSIDE A COUNTERBORED PANEL AND MATED WITH PLUG.**



**FIGURE 1: PANEL CUTOUT**

\*\*FOR PANEL THICKNESS GREATER THAN .150 [3.81], THE PANEL MUST BE COUNTERBORED.

PANEL THICKNESS

SECTION A-A

PROPRIETARY AND CONFIDENTIAL THE INFORMATION CONTAINED IN THIS DRAWING IS THE SOLE PROPERTY OF SOLID SEALING TECHNOLOGY. ANY REPRODUCTION IN PART OR AS A WHOLE WITHOUT THE WRITTEN PERMISSION OF SOLID SEALING TECHNOLOGY IS PROHIBITED.				THIRD ANGLE PROJECTION 		TITLE 25 PIN SUB D CONNECTOR			
REV.	APP'D	DATE	SCALE 5:4	DIMENSIONS IN INCHES [mm]	DRAWN	CW	7/31/2020	PART NO. FA41156 REV. C	WWW.SOLIDSEALING.COM
C2	CW	11/12/2020	CL0692-11 MOUNTING		ENG APPR.	HJ	10/23/2020		SALES DWG NO. FA41156SL REV. C2

**DIMENSIONS ARE FOR REFERENCE ONLY. UNLESS NOTED, NO TOLERANCES ARE IMPLIED. CONSULT SST TO DISCUSS YOUR SPECIFIC REQUIREMENTS.**