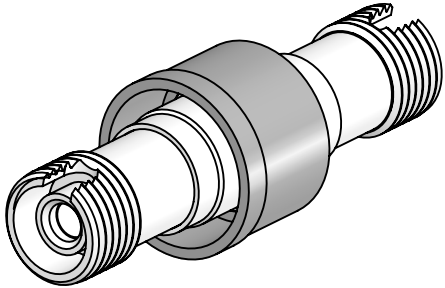
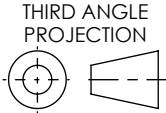


PERFORMANCE SPECIFICATIONS
.35 dB LOSS PER JUNCTION @ 850 nm TYPICAL, .5 dB MAX (@ ROOM TEMPERATURE)
OPERATING TEMPERATURE: -40°C TO 150°C
200°C BAKEOUT FOR 1 HOUR
LEAK RATE <1 X 10E-9 ATM-CC/SEC (He)



PROPRIETARY AND CONFIDENTIAL
THE INFORMATION CONTAINED IN THIS DRAWING IS THE SOLE PROPERTY OF SOLID SEALING TECHNOLOGY. ANY REPRODUCTION IN PART OR AS A WHOLE WITHOUT THE WRITTEN PERMISSION OF SOLID SEALING TECHNOLOGY IS PROHIBITED.



TITLE
MM FEEDTHROUGH, FC-FC, 50/125



REV.	APP'D	DATE	SCALE 2:1	DIMENSIONS IN INCHES [mm]	DRAWN	JF	02/08/2023
A1	JF	02/08/2023	FOFDN001-35		ENG APPR.	JF	02/08/2023

PART NO. FA44892 REV. A

WWW.SOLIDSEALING.COM

SALES DWG NO. FA44892SL REV. A1

DIMENSIONS ARE FOR REFERENCE ONLY. UNLESS NOTED, NO TOLERANCES ARE IMPLIED. CONSULT SST TO DISCUSS YOUR SPECIFIC REQUIREMENTS.