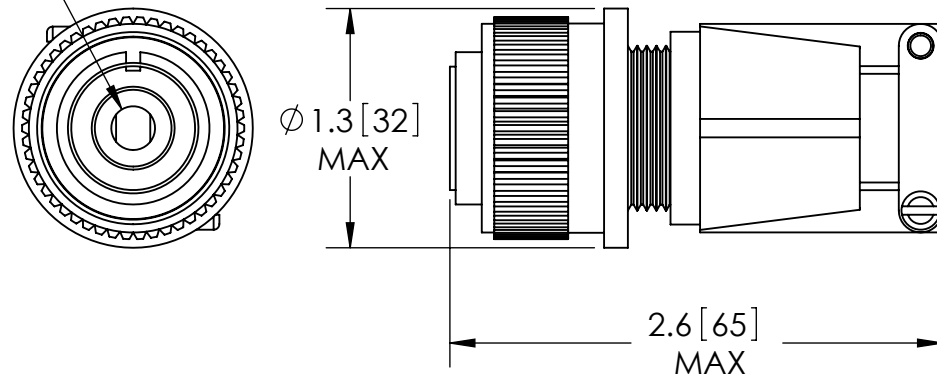


SILVER PLATED
SIZE 4 CRIMP CONTACT

ACCEPTS
4 AWG WIRE
FOR CRIMP



| RATINGS | |
|-----------------------------|-----------------|
| VOLTAGE: | 700 V DC |
| CURRENT @ ROOM TEMPERATURE: | 120 AMPS |
| PRESSURE: | 500 PSIG @ 20°C |
| TEMPERATURE WITHOUT PLUG: | -269°C TO 450°C |
| TEMPERATURE WITH PLUG: | -55°C TO 125°C |

-AMPHENOL AMPHE-POWER ® SERIES STRAIGHT AIR SIDE PLUG INCLUDED.
FOR INSTALLATION INSTRUCTIONS REFER TO AMPHENOL ® PUBLICATION L-757.

WWW.SOLIDSEALING.COM

| | | | | | | | | | | |
|---|-------|------------|-------------|---------------------------|----------------------------|----|------------|-----------------------------|--|---|
| PROPRIETARY AND CONFIDENTIAL THE INFORMATION CONTAINED IN THIS DRAWING IS THE SOLE PROPERTY OF SOLID SEALING TECHNOLOGY. ANY REPRODUCTION IN PART OR AS A WHOLE WITHOUT THE WRITTEN PERMISSION OF SOLID SEALING TECHNOLOGY IS PROHIBITED. | | | | | THIRD ANGLE PROJECTION | | | TITLE: ONE PIN CONNECTOR | | |
| REV. | APP'D | DATE | SCALE 1:1 | DIMENSIONS IN INCHES [mm] | DRAWN | JS | 1/12/2009 | PART NO. KT19249 REV. A | | SOLID SEALING TECHNOLOGY, INC. SALES DWG NO. KT19249SL REV. A5 |
| A5 | JF | 09/12/2019 | FTDP0010-11 | | ENG APPR. | MH | 07/01/2009 | | | |

DIMENSIONS ARE FOR REFERENCE ONLY. UNLESS NOTED, NO TOLERANCES ARE IMPLIED. CONSULT SST TO DISCUSS YOUR SPECIFIC REQUIREMENTS.